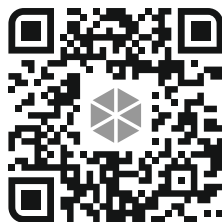




Quick installation guide

Full manual is available on www.satel.eu



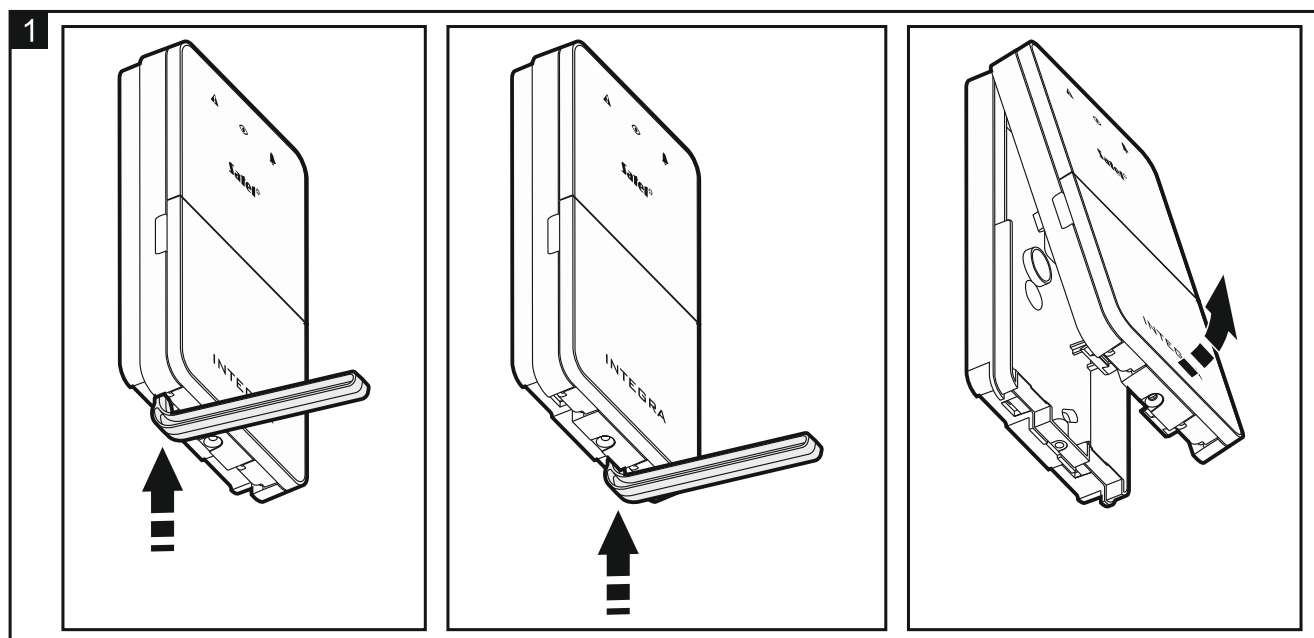
The device should be installed by qualified personnel.

Before installation, please read the full manual thoroughly.

Disconnect power before making any electrical connections.

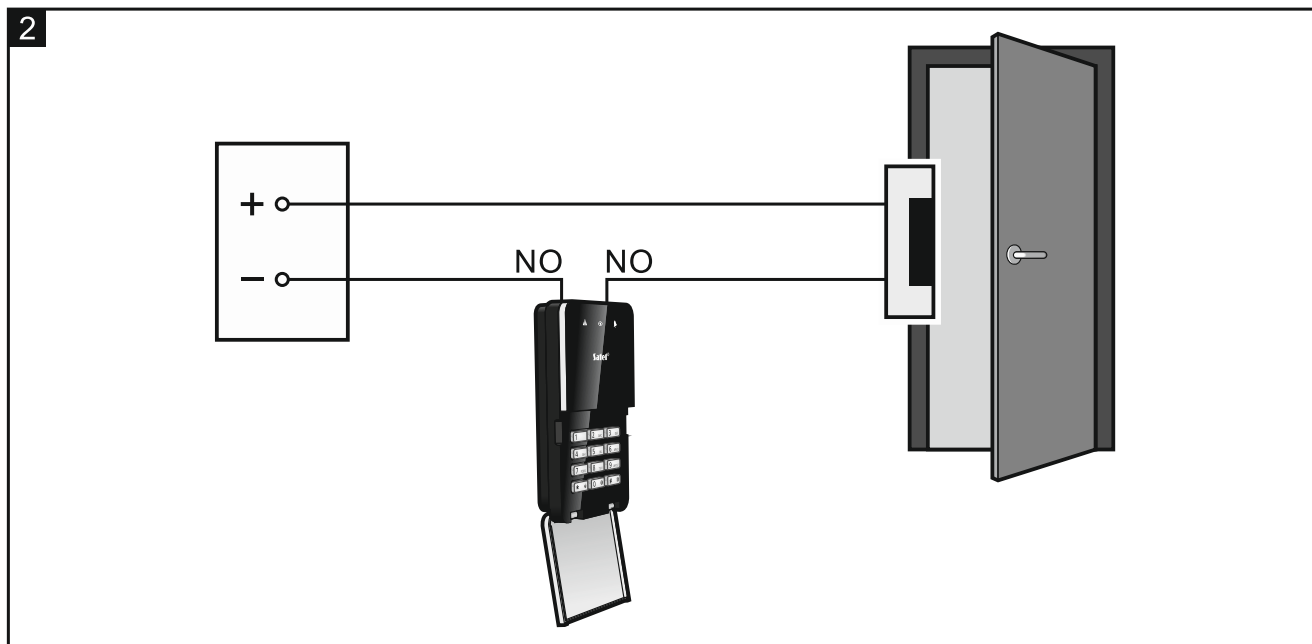
The keypad is designed for indoor installation. The place of installation should be readily accessible to the system users.

1. Open the keypad enclosure (Fig. 1). The enclosure opening tool, shown in the illustration, is included in the keypad delivery set.



2. Set the partition keypad address (see “Address setting”).
3. Run the wires through the opening in the enclosure base.
4. Using wall plugs (anchors) and screws, fasten the enclosure base to the wall. Select wall plugs specifically intended for the mounting surface (different for concrete or brick wall, different for drywall, etc.).
5. Connect the CLK, DTA and COM terminals to the appropriate terminals of the control panel expander bus (see the control panel installer manual).

6. If the partition keypad is to control an electric strike, electromagnetic lock or another door actuator, connect this device to the NO terminals as shown in Fig. 2. It is not recommended that the door actuator be powered from the same source as the partition keypad.



7. If the keypad is to supervise the door status, connect the detector supervising the door status to the IN and COM terminals. If the keypad is not to supervise the door status, connect the IN terminal to the COM terminal or, when configuring the keypad, set value 0 for the "Max. door open time" parameter.
8. Connect the power wires to the 12V and COM terminals. The keypad may be powered directly from the control panel, from an expander with power supply or from a power supply.
9. Close the enclosure and then lock it with the screw.
10. Power on the alarm system.
11. Start the identification function in the control panel (see the control panel installer manual). The keypad will be identified as "INT-S/SK".

Address setting

To set the address, use the DIP switches on the electronics board. The switches have numbers assigned to them. The number for OFF position is 0. The numbers assigned to the switches in ON position are presented in the table below. The sum of these numbers is the address set.

Switch (ON position)	1	2	3	4	5
Number	1	2	4	8	16

The declaration of conformity may be consulted at www.satel.eu/ce