

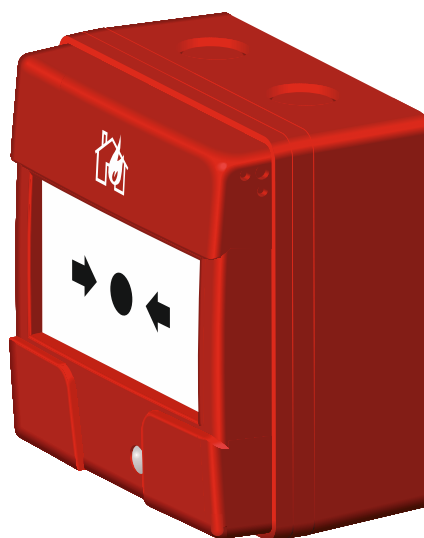


Conventional manual call point
for outdoor use

ROP-111/EU

Firmware version 1.00

EN



rop-111_en 01/23

Satel®

SATEL sp. z o.o. • ul. Budowlanych 66 • 80-298 Gdańsk • POLAND
tel. +48 58 320 94 00
www.satel.pl

IMPORTANT

The device should be installed by qualified personnel.

Prior to installation, please read carefully this manual in order to avoid mistakes that can lead to malfunction or even damage to the equipment.

Disconnect power before making any electrical connections.

Changes, modifications or repairs not authorized by the manufacturer shall void your rights under the warranty.

The following symbols may be used in this manual:



- note,



- caution.

This manual applies to the ROP-111/EU conventional manual call point for outdoor use.

The ROP-111 call point is used to manually trigger an alarm when a fire is discovered. The call point is designed to work with the CSP-104, CSP-108, CSP-204 and CSP-208 fire alarm control panels.

1. Features

- Resettable plastic pane.
- Key to enable:
 - testing,
 - resetting.
- LED to indicate activation of the call point.
- Mounting box included.
- ROP-FLAP – optional protective cover to prevent unintentional activation.

2. Description

Call point activation

Press hard on the pane to activate the manual call point. The pane will bend and the switch will open. When the pane is bent, the yellow strip is visible. When the call point is activated, the LED will start flashing.



If the ROP-FLAP is installed on the call point, lift the flap before you press on the pane.

Call point reset

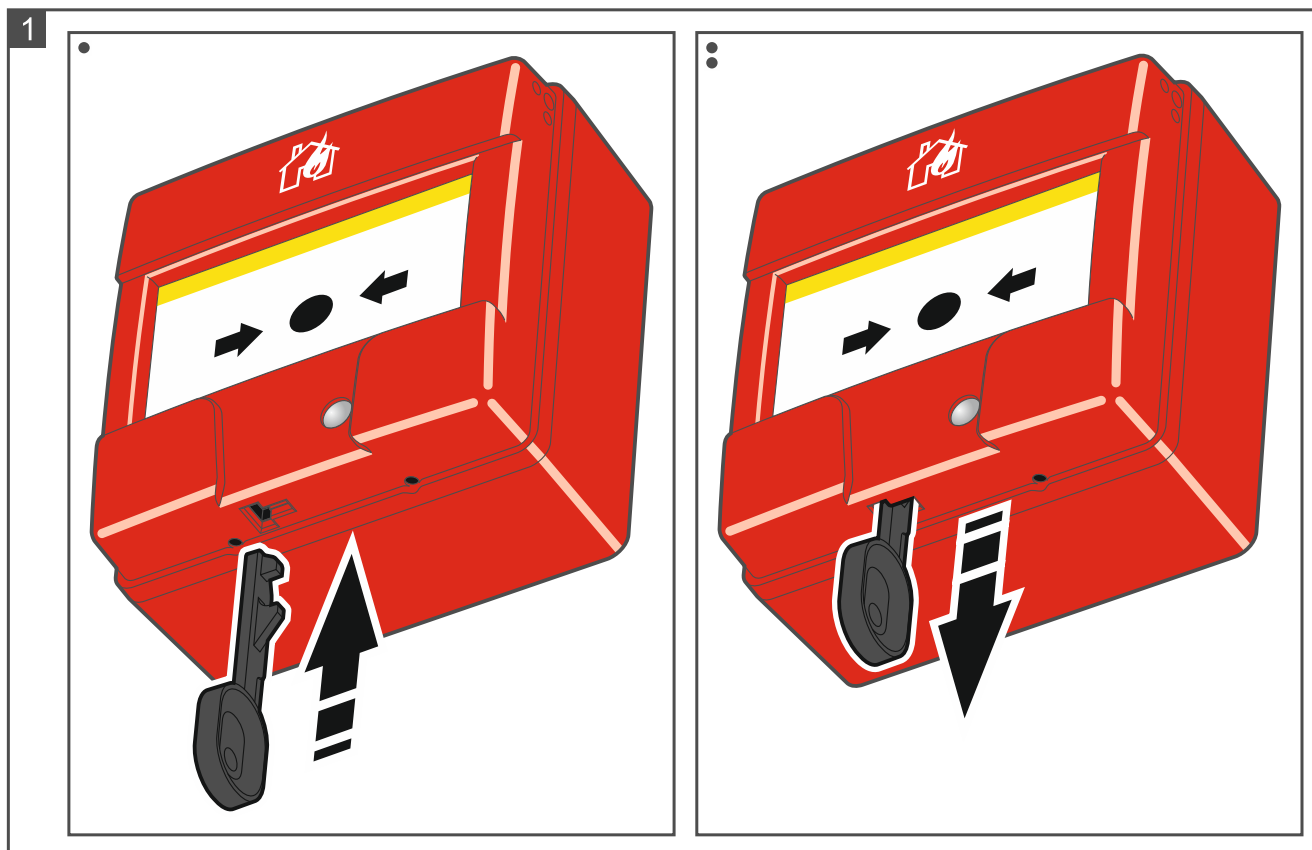
Use the key to reset the call point. Insert the key into the hole on the bottom of the call point, then pull it out to bring the pane back to its correct position (Fig. 1).

Call point test

1. Run the test function in the fire alarm control panel (see the control panel manual).
2. Insert the key into the hole on the bottom of the call point. The pane will bend and the switch will open. The LED will start flashing.
3. Pull out the key to reset the call point.

LED indicator

The red LED is flashing when the call point is activated. The LED stops flashing when the call point is reset.



3. Installation

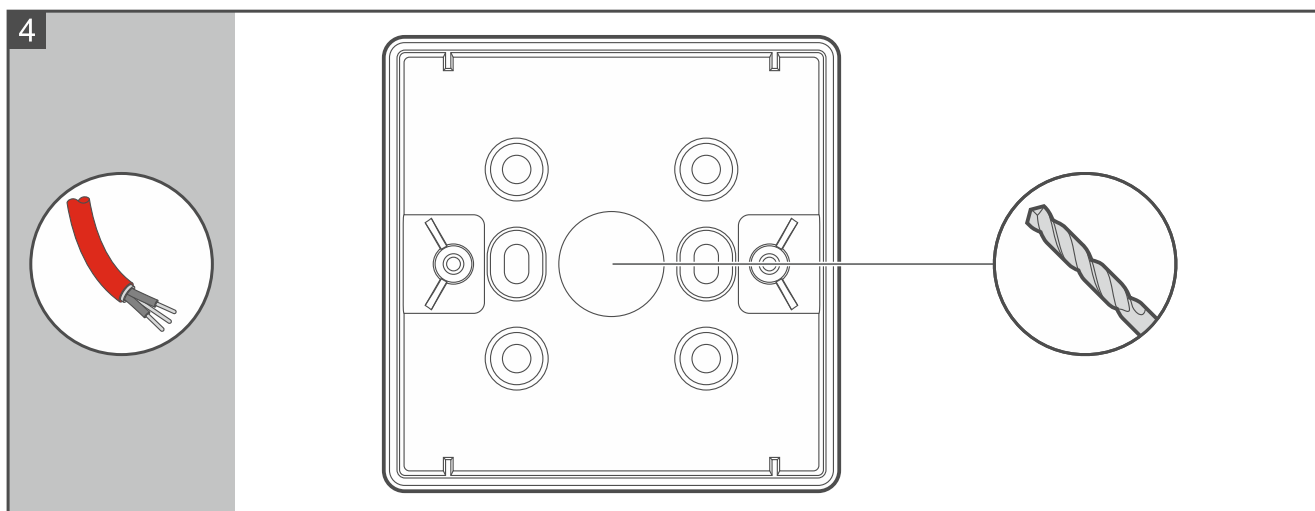
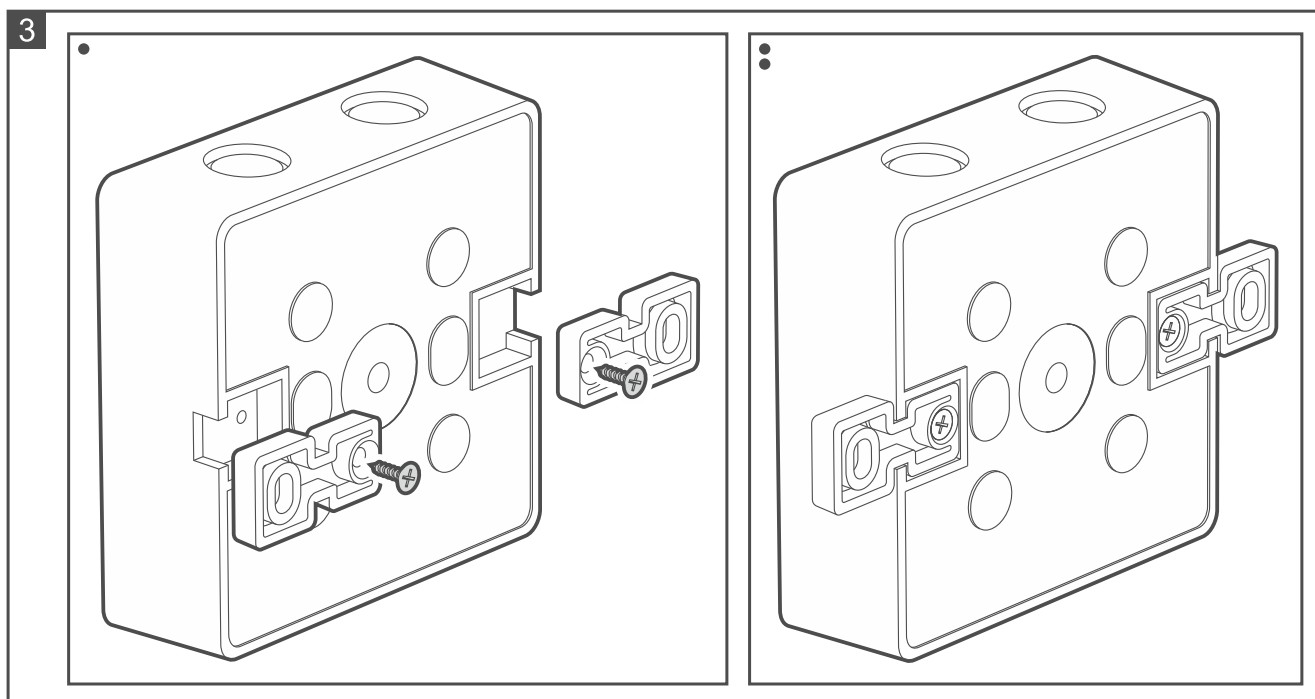
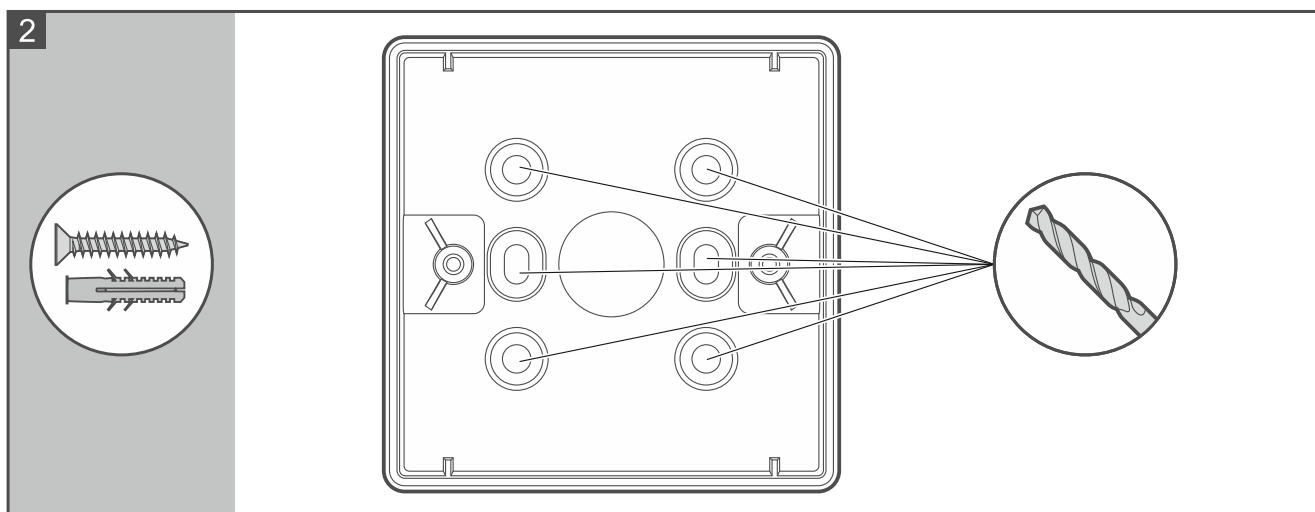


Disconnect power before making any electrical connections.

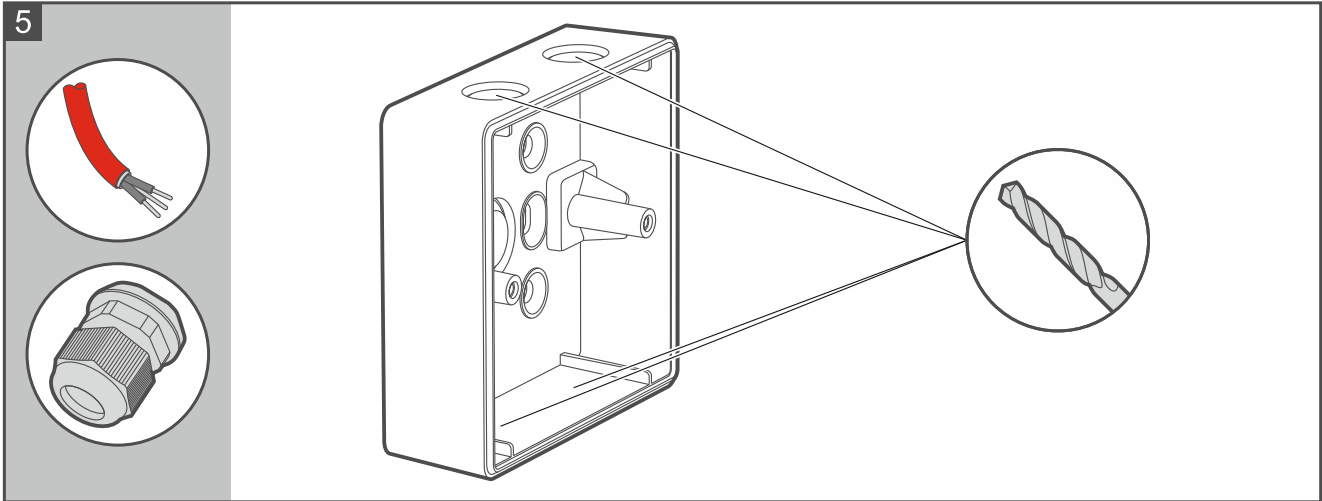
The ROP-111 manual call point is designed for installation outdoors and indoors in places where condensation of water vapor may occur. Select the place of installation so that the manual call point is visible and easily accessible.

1. Drill the holes for screws in the mounting box (Fig. 2) or fix the brackets to the mounting box (Fig. 3).
2. Drill the hole(s) for wires in the mounting box. The markings for the holes are provided on the base (Fig. 4) and on the walls of the mounting box (Fig. 5). If you drill the holes in the mounting box, use cable glands (recommended cable gland: PG-9).
3. Place the mounting box against the wall and mark the location of the screw holes.
4. Drill the holes for wall plugs (anchors).
5. Run the cables inside the box.
6. Use wall plugs (anchors) and screws to secure the mounting box to the wall. Select wall plugs specifically intended for the mounting surface (different for concrete or brick wall, different for plaster wall, etc.).
7. Remove the call point cover (Fig. 6).
8. Connect the zone circuit wires to the call point (Fig. 7). If the call point is connected to the zone circuit at the end of line, screw a 5.6 k Ω resistor to its terminals. Connect the cable shields to the E terminals.
9. Use screws to secure the call point to the mounting box (Fig. 8-9).
10. Insert the pane (Fig. 10-11).
11. Replace the enclosure cover (Fig. 12-13).

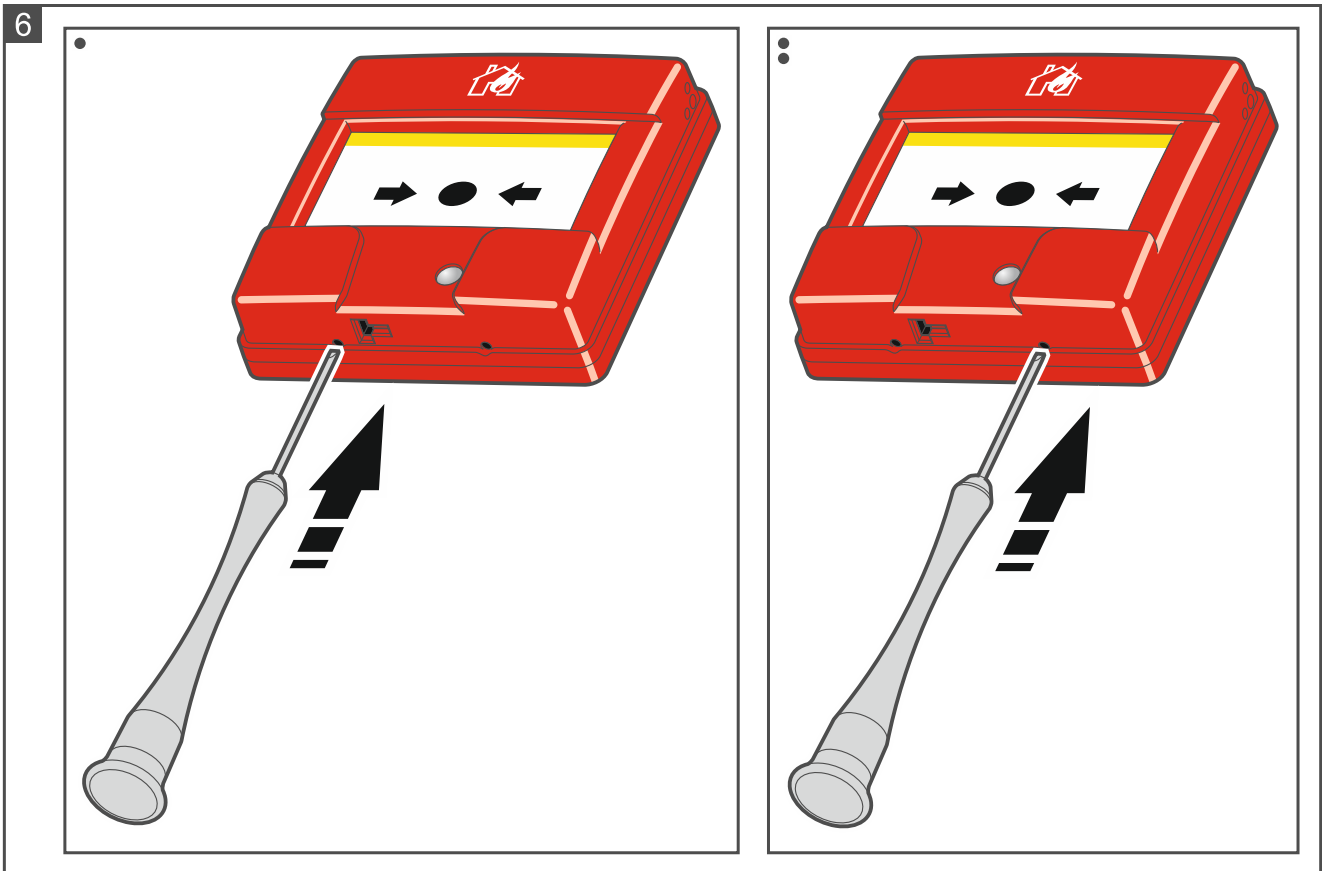
12. Insert the key into the hole on the bottom of the call point, then pull it out to set the pane in its correct position (Fig. 1).



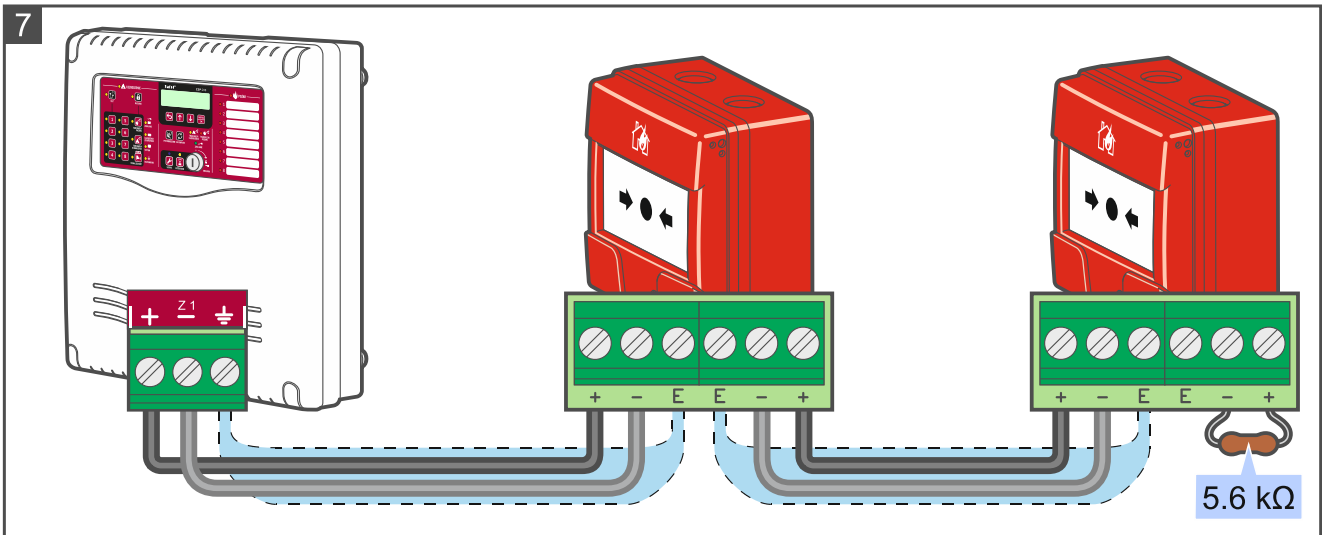
5

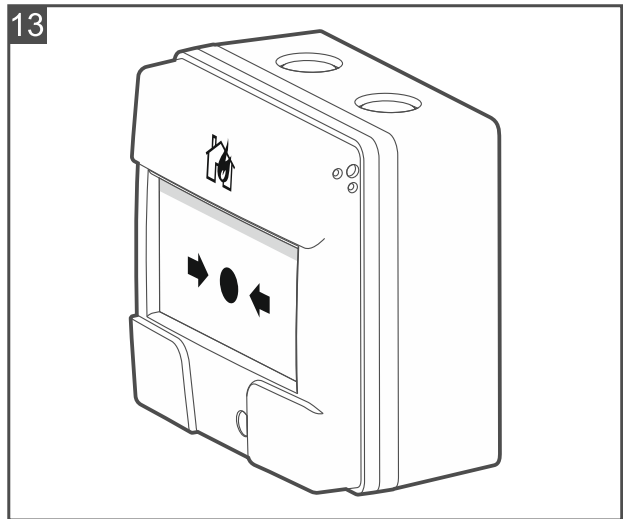
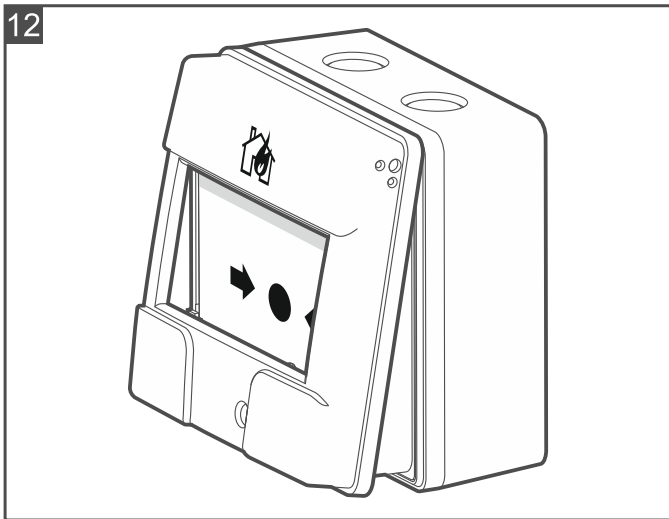
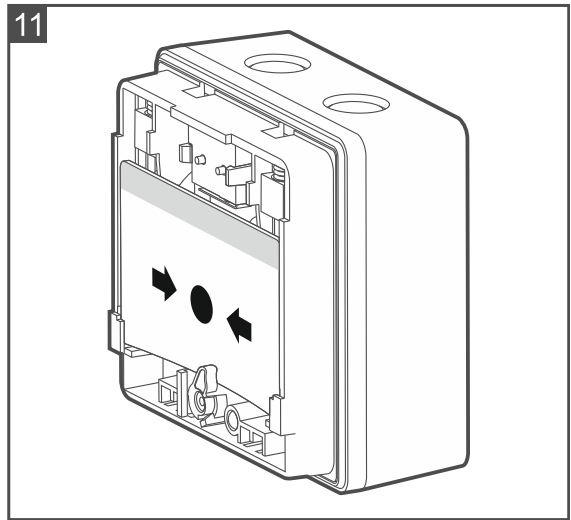
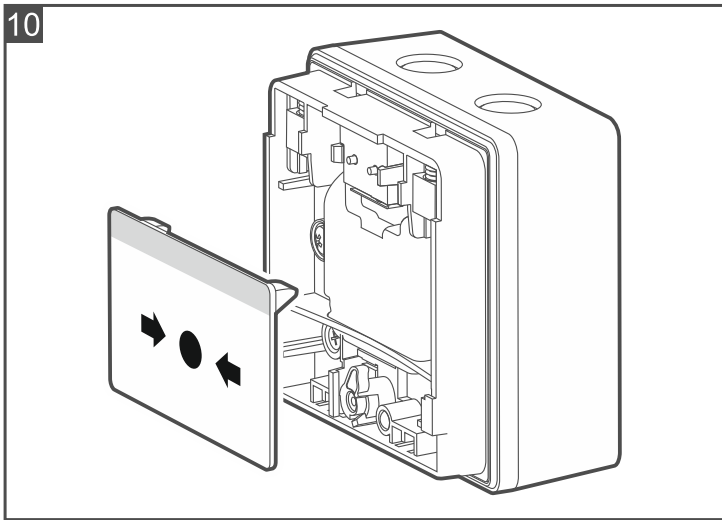
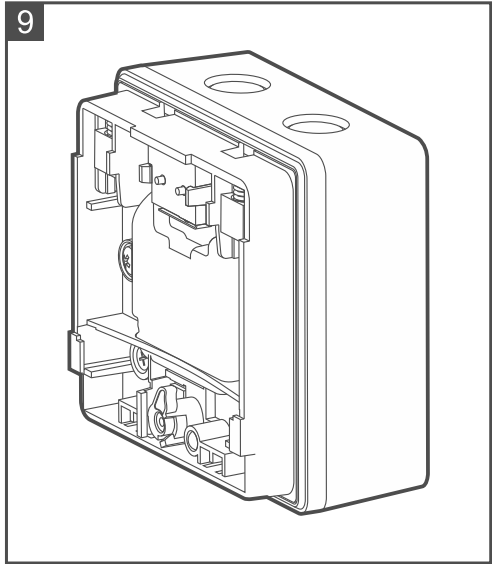
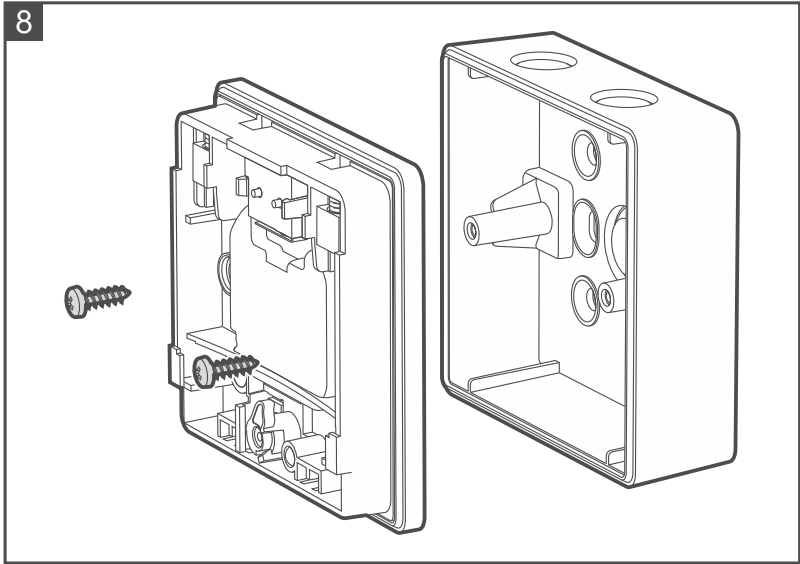


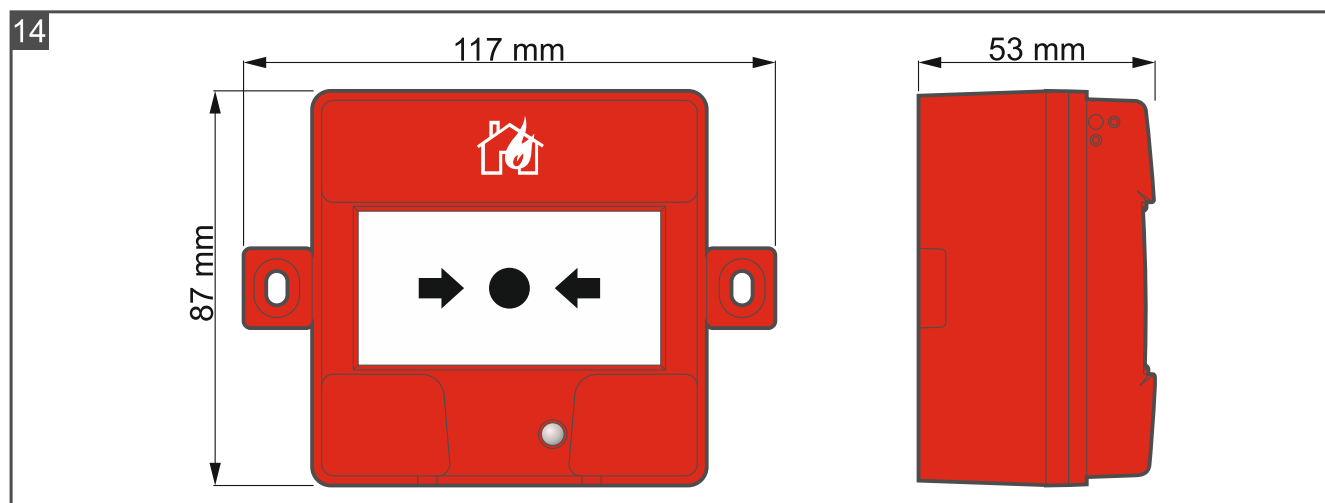
6



7

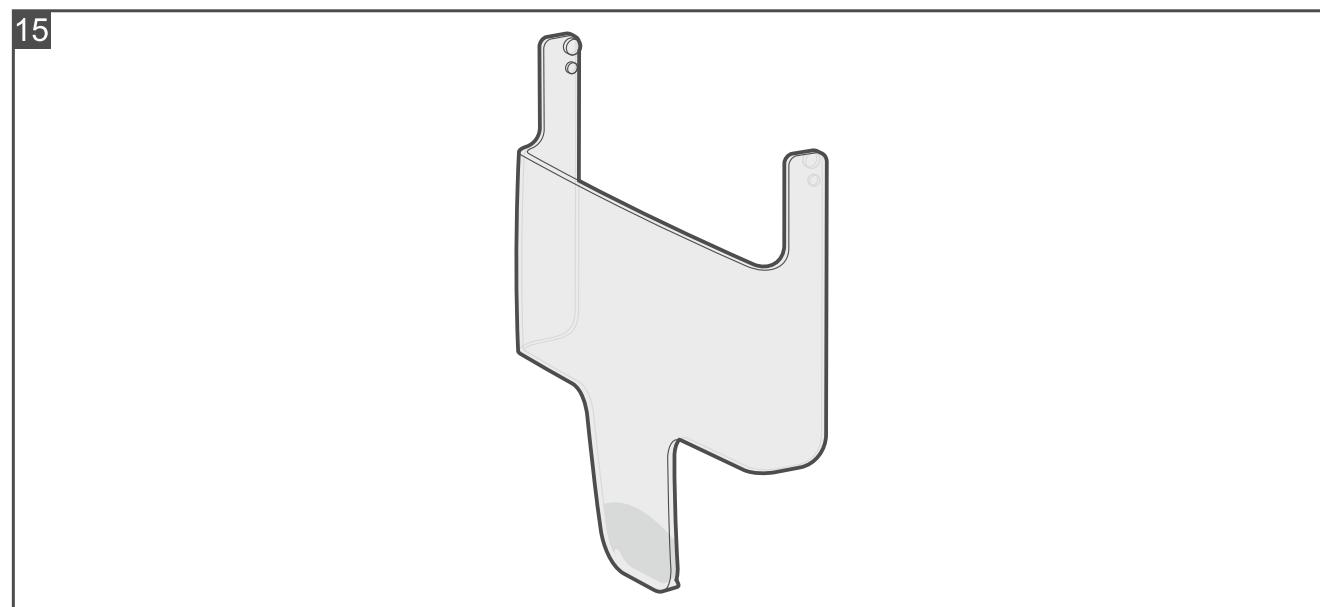






4. ROP-FLAP

You can install the ROP-FLAP on the call point (Fig. 15). It is a transparent protective cover that prevents unintentional activation of the call point. The flap is sold separately.



5. Maintenance

The fire alarm system elements require regular maintenance. The periodic checks of the ROP-111/EU manual call point should be carried out at least every 6 months. In spaces where working conditions are difficult (e.g. dust, aggressive environment that may cause corrosion, etc.), the periodic checks should be carried out more often.

As part of maintenance, start a test in the control panel and activate the manual call point. Please go to the fire alarm control panel manuals to find out how to start the test. To activate the manual call point, insert the key into the hole on the bottom of the call point (Fig. 1).

6. Specifications

Supply voltage	9...30 VDC
Quiescent current consumption	0 mA

Alarm current consumption	25 mA
Operating temperature range.....	-25°C...+70°C
Maximum humidity	95%
Protection rating.....	IP66
Dimensions without brackets.....	87 x 87 x 53 mm
with brackets.....	117 x 87 x 53 mm
Weight.....	180 g

The ROP-111/EU manual call point conforms to the essential requirements of the EU Regulations and Directives:

CPR 305/2011 Regulation of the European Parliament and of the Council of 9 March 2011 laying down harmonized conditions for the marketing of construction products and repealing the Council Directive 89/106/EEC on construction products;

EMC 2014/30/UE Electromagnetic Compatibility Directive;

LVD 2014/35/EU Low Voltage Directive.

The CNBOP-PIB Certification Body in Józefów issued the Certificate of Constancy of Performance **1438-CPR-0878** for the construction product ROP-111/EU manual call point, confirming its compliance with the requirements of EN 54 11:2001+A1:2005.

The Certificate and the Declaration of Performance can be downloaded from the **www.satel.pl** website.

The ROP-111/EU manual call point has been granted the Certificate of Admittance **No 4832/2023** by the CNBOP-PIB in Józefów.

The Certificate of Admittance can be downloaded from the **www.satel.pl** website.



SATEL Sp. z o.o. • ul. Budowlanych 66 • 80-298 Gdańsk • POLAND

1438

1438-CPR-0878

DOP/CPR/0878

EN 54 11:2001+A1:2005

Fire safety. Manual fire alarm reporting.

Type A manual call points.

Declaration of Performance DOP/CPR/0878

Application – fire safety.

Technical specifications – please refer to this manual.