



Quick installation guide

Full manual is available on www.satel.eu



The device should be installed by qualified personnel.

Before installation, please read the full manual thoroughly.

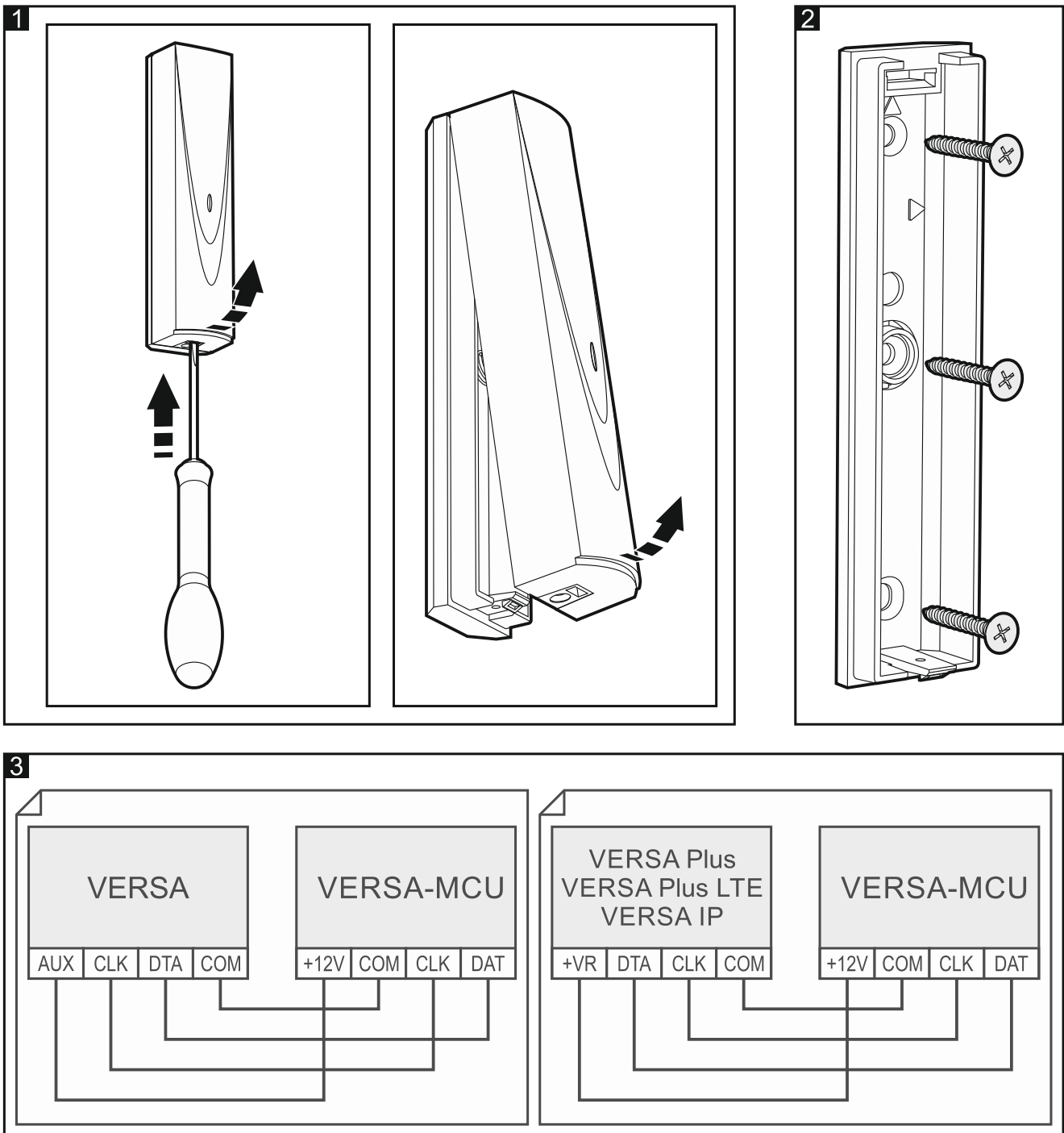
Changes, modifications or repairs not authorized by the manufacturer shall void your rights under the warranty.

Disconnect power before making any electrical connections.

The device should be installed indoors, in spaces with normal air humidity. When choosing the installation location, remember that thick masonry walls, metal partitions etc. reduce the radio signal range. Installing the device in close vicinity of electrical systems is not recommended, since it can affect the range of radio signal.

Run the cables to be used for making connection to the location where the device will be installed. Use an unshielded non-twisted cable. The cabling should not be run in close vicinity of low-voltage electrical system wires, and especially of power cables for high-power equipment (such as electric motors).

1. Open the controller enclosure (Fig. 1).
2. Place the enclosure base against the wall and mark location of the mounting holes.
3. Drill holes for wall plugs (anchors) in the wall.
4. Make the cable entry opening at the base.
5. Run the wires through the prepared opening.
6. Using wall plugs and screws, secure the enclosure base to the wall (Fig. 2). The wall plugs delivered with the device are intended for concrete, brick, etc. For other types of surface (drywall, styrofoam), use the appropriately selected wall plugs.
7. Connect the CLK, DAT and COM terminals to the corresponding terminals of the control panel communication bus (Fig. 3).
8. Connect the power wires to the +12V and COM terminals. If the distance to the control panel is less than 300 meters, the controller can be supplied directly from the control panel (Fig. 3). If the distance to the control panel is higher, the controller must be supplied from another power source, which is located at a closer distance (a power supply or an expander with power supply).
9. Close the enclosure.
10. Power up the controller.
11. Start the identification function in the control panel (see the control panel installer manual). The controller will be identified as two devices: INT-RX (address 7) and VERSA-MCU (address 8).



Hereby, SATEL sp. z o.o. declares that the radio equipment type VERSA-MCU is in compliance with Directive 2014/53/EU. The full text of the EU declaration of conformity is available at the following internet address: www.satel.eu/ce